



# 4.4 COMMUNITY

## ADULT SOCIAL SERVICES



### CURRENT SITUATION

Adult social services are provided by Kent County Council's Social Care, Health and Well Being (SCHW) team. The KCC Adult Social Care client groups include: People with learning disabilities; people with mental health needs; older people; and people with physical disabilities people with physical disabilities; and older people (over 65 years).

### HEADLINES

#### Learning disabilities

#### Capacity issues in 6 Districts

Accommodation Investment priority in Ashford, Dartford, Dover, Sevenoaks, Tonbridge & Malling and Tunbridge Wells

#### Mental health

#### Capacity issues in 3 Districts

Accommodation Investment priority in Dartford, Dover, and Tonbridge & Malling

#### Physical disabilities

#### Capacity Issues in 8 Districts

Accommodation Investment priority in Dartford, Gravesham, Maidstone, Swale, Thanet, Tonbridge & Malling and Tunbridge Wells

#### Older people

#### Capacity Issues in 3 Districts

Accommodation Investment priority in Dartford, Swale and Thanet

Figure 4.8 Kent & Medway

## Adult social care facilities

Contains Ordnance Survey data © Crown copyright and database right 2015.

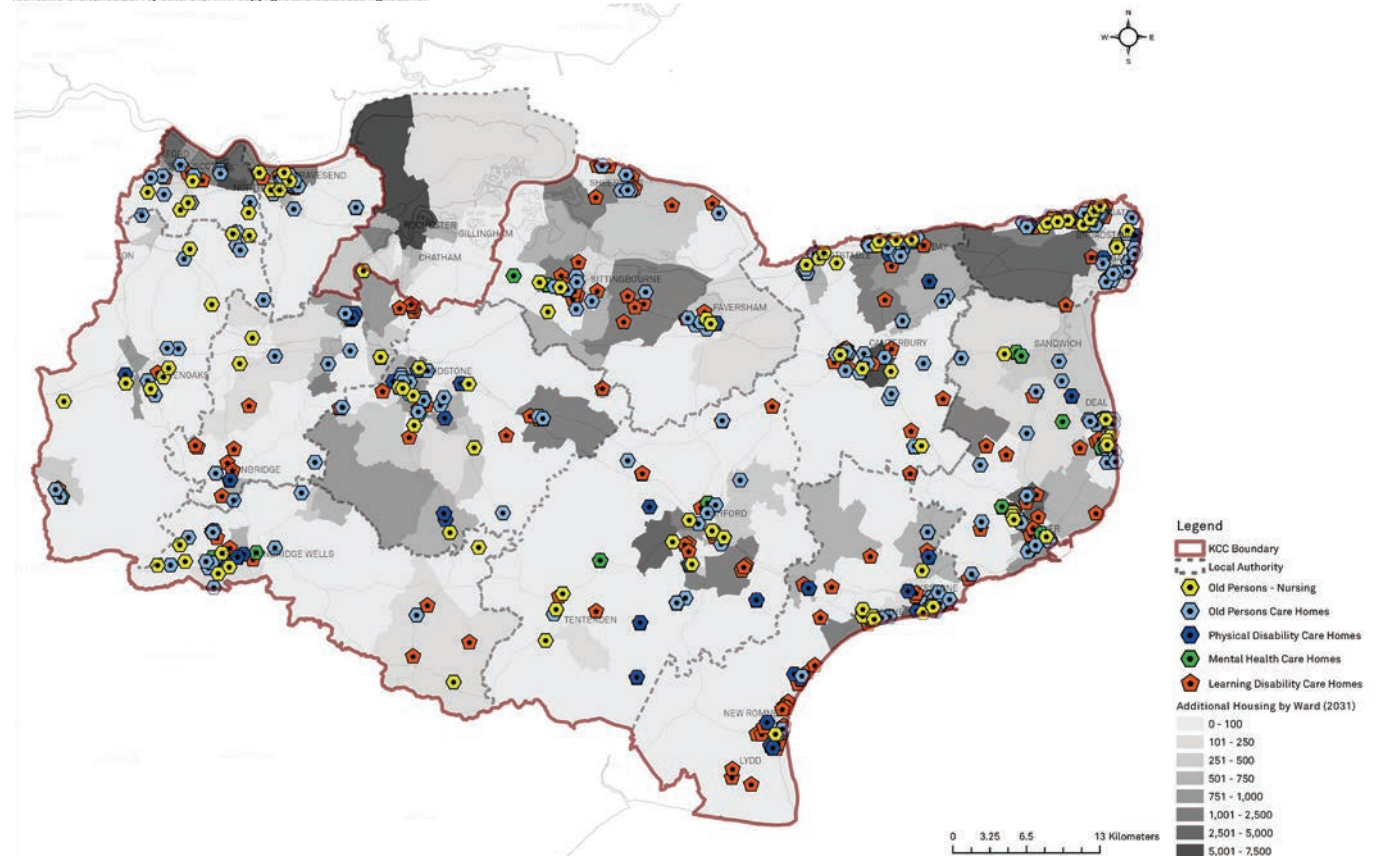


Table 4.7 Kent & Medway

## Social care accommodation capacity & infrastructure

	LEARNING DISABILITY	MENTAL HEALTH	PHYSICAL DISABILITY	OLDER PEOPLE
Ashford	Red	Green	Green	Green
Canterbury	Green	Yellow	Green	Yellow
Dartford	Red	Red	Red	Red
Dover	Red	Red	Red	Yellow
Gravesham	Green	Yellow	Red	Green
Maidstone	Green	Yellow	Red	Green
Sevenoaks	Red	Green	Green	Green
Shepway	Yellow	Green	Yellow	Yellow
Swale	Green	Green	Red	Red
Thanet	Green	Green	Red	Red
Tonbridge & Malling	Red	Red	Red	Yellow
Tunbridge Wells	Red	Green	Red	Green

### EXAMPLE COMMUNITY CAPACITY PROJECTS PROPOSED

#### Chilmington Green

Adult social services space in new Chilmington Green Community Hub, Ashford

#### Lowfield Street, Dartford

New social care hub

#### Aylesham Health & Social Care Centre

Delivery of new centre in Dover

#### West Kent Cold Store Site

Delivery of learning disability accommodation within 2 miles of site - Sevenoaks

### Development contributions

Contributions from new developments to ensure that new community facilities buildings are suitable for use by commissioned service providers to deliver services to FSC clients:

- Hillborough, South Canterbury and Sturry/Broad Oak - Canterbury
- Whitfield - Dover
- Creekside - Swale
- Land North of Haine Road - Thanet
- Peter's Pit - Tonbridge & Malling

**SOURCE: KENT ADULT ACCOMMODATION STRATEGY: EVIDENCE BASE, KENT COUNTY COUNCIL**

**RED & AMBER SHADING INDICATES REQUIREMENT FOR ADDITIONAL CAPACITY / FACILITIES.**

### FUTURE REQUIREMENTS TO MEET GROWTH



Kent & Medway

**64**

Additional Nursing Care Facilities (60 bed)



Kent & Medway

**58**

Additional Extra Care Facilities (60 bed)



Kent & Medway

**39**

Additional Learning Disability Support Units

### COSTS AND FUNDING

In addition to the community capacity based project requirements to support population growth KCC have also developed a detailed Social Care Accommodation Strategy which sets out the forecast change in demand for the full range of care clients. This has highlighted the need for considerable investment in older persons nursing and extra care accommodation and also supported accommodation for clients with learning disabilities. While KCC is unlikely to directly deliver this future accommodation the cost of the development has been identified but assumed to be funded by private sector and voluntary organisations.

The following costs and funding have been identified for Kent:

**Cost = £1,081,490,000**

**Secured Funding = £3,420,000**

**Expected Funding = £973,520,000**

**Funding Gap = £104,540,000**

## LIBRARY SERVICES



Kent & Medway  
**115**  
libraries

### CURRENT SITUATION

Figure 4.9 and Table 4.7 set out existing library provision in Kent. Library services in Kent are organised by the County Council's Library, Registration and Archive Service. KCC continues to explore the potential for a charitable trust to deliver the service which will have implications to future service delivery.

### HEADLINES

Kent

**15.5 sqm**

library space for every 1,000 people on average

Thanet - comparatively high level of provision

**25 sqm**

library space for every 1,000 people

Medway also rates well with 22 sq.m

Dartford and Dover also rate well with 17 sqm

Canterbury - comparatively poor provision

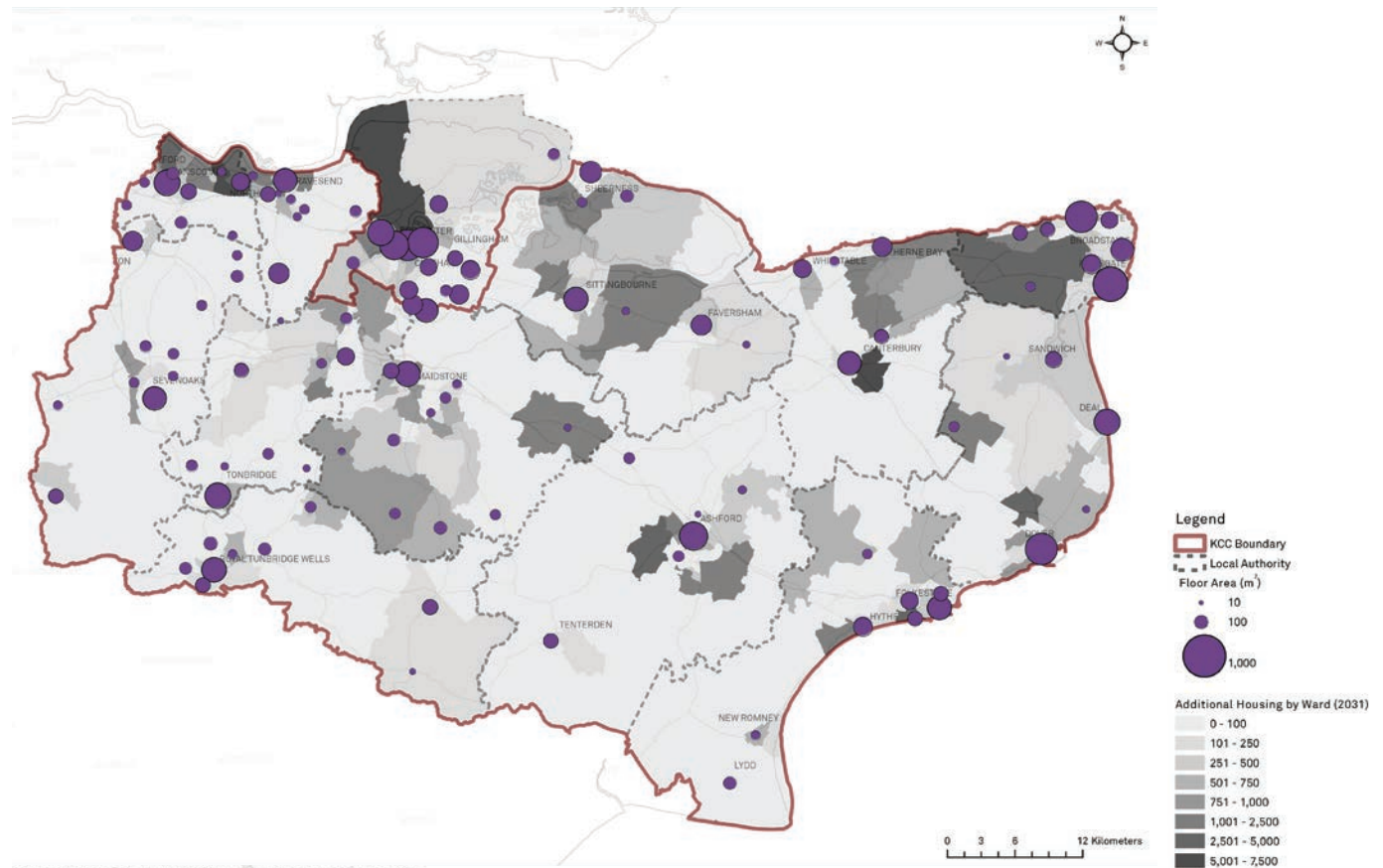
**9 sqm**

library space for every 1,000 people

Below average provision also in Ashford, Maidstone, Swale, Tonbridge & Malling and Tunbridge Wells

Figure 4.9 Kent & Medway

## Library provision against housing growth



Contains Ordnance Survey data © Crown copyright and database right 2015.

Table 4.8 Kent & Medway

## Library capacity and proposed infrastructure

	NUMBER OF LIBRARIES	USABLE FLOORSPACE (SQ.M)	USABLE FLOORSPACE PER 1,000 POPULATION
Ashford	6	1,250	10.2
Canterbury	5	1,379	9.0
Dartford	9	1,712	16.9
Dover	6	1,931	17.2
Gravesham	10	1,594	15.3
Maidstone	11	1,651	10.3
Sevenoaks	11	1,870	15.9
Shepway	8	1,794	16.4
Swale	7	1,673	11.9
Thanet	8	3,482	25.3
Tonbridge & Malling	9	1,582	12.7
Tunbridge Wells	9	1,636	14.0
<b>KENT</b>	<b>99</b>	<b>21,554</b>	<b>14.3</b>
Medway	16	5,983	21.9
<b>KENT &amp; MEDWAY</b>	<b>115</b>	<b>27,537</b>	<b>15.5</b>

### EXAMPLE INFRASTRUCTURE PROJECTS PROPOSED

The list below sets out key library investments expected to support population growth to 2031:

#### Chilmington Green

capital cost to build library space in a new Community Hub in Ashford, contributions towards Stanhope Library, Ashford Gateway and the mobile library service.

#### Library expansion at Queenborough

Development of Library Services in Queenborough and Rushenden - Swale

#### New Cultural & Learning Hub

New library provision as part of wider redevelopment of existing Museum/Art Gallery/Library/Adult Education Centre

#### Southborough Community Hub

new library provision as part of wider community space including replacement theatre and town council offices

#### Ebbsfleet Garden City

New library provision to support new community

#### Sittingbourne

Town centre development - new multi Service centre including library and other KCC and District services

#### Cranbrook Community Hub

New library as part of wider community space, including town council offices and multi-purpose indoor meeting space

### COSTS AND FUNDING

The following costs and funding have been identified for Kent and Medway:

**Cost = £33,900,000**

**Secured Funding = £3,980,000**

**Expected Funding = £4,480,000**

**Funding Gap = £25,440,000**

## YOUTH SERVICES



Kent & Medway

**72**

youth service providers in total  
Includes hubs, youth tutors and commissioned services

### CURRENT SITUATION

Youth services in Kent are run either by KCC or on behalf of KCC under contract to a range of commissioned providers with the aim to provide a core offer comprising a 'Hub' youth centre, one street based project and one or more school based workers. This is enhanced through the provision of commissioned youth work activities.

### HEADLINES

Kent & Medway

**0.46**

youth service providers per 1,000 young people

Shepway - good provision

**0.67**

youth service providers per 1,000 young people

Thanet and Tonbridge & Malling also rate well in comparison to the Kent & Medway average.

Gravesham - poor provision

**0.32**

youth service providers per 1,000 young people

Ashford, Canterbury and Maidstone also rate poorly in comparison to the Kent & Medway average.

Figure 4.10 Kent & Medway

## Youth service provision against housing growth

Contains Ordnance Survey data © Crown copyright and database right 2015.

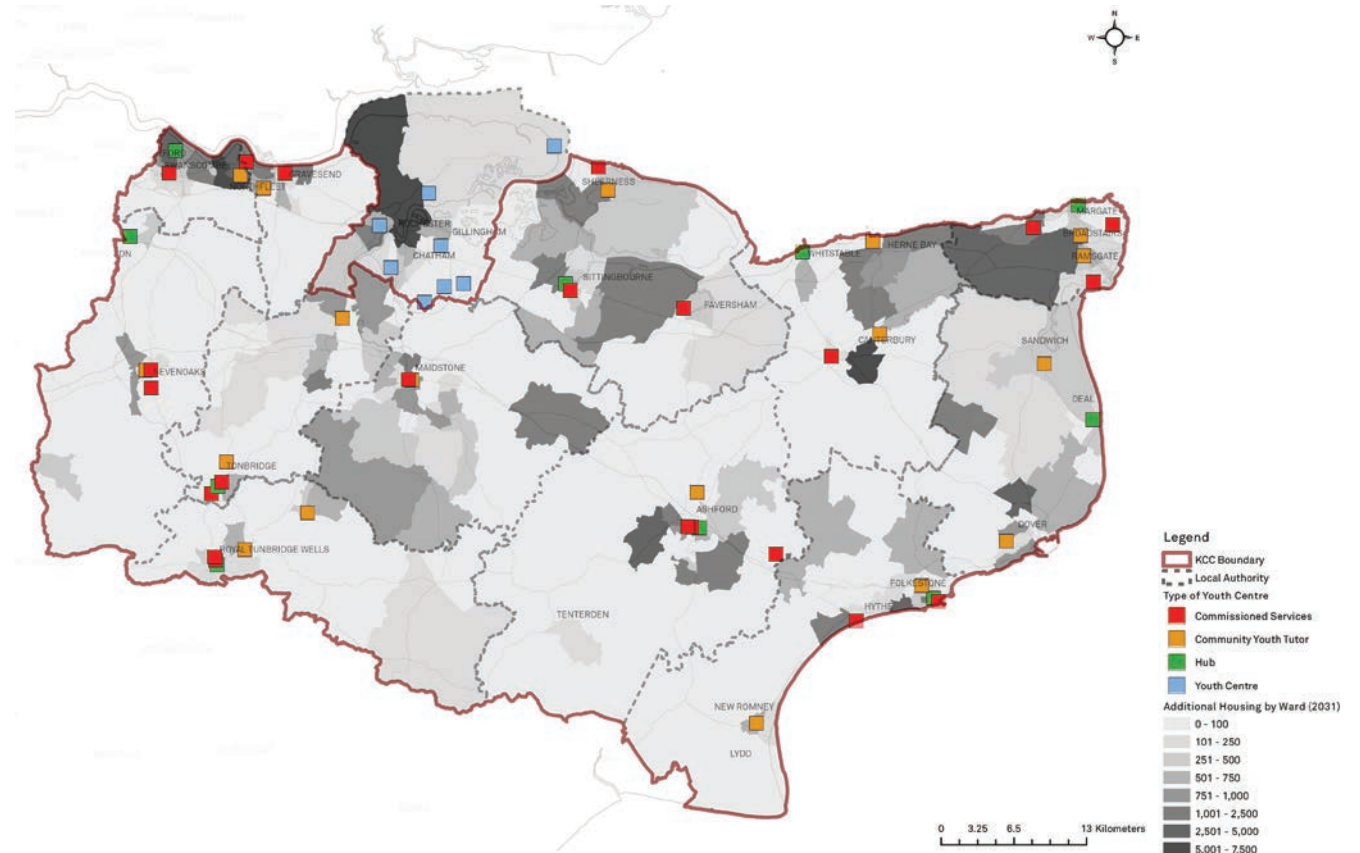


Table 4.9 Kent & Medway

## Youth services capacity and proposed infrastructure

	'HUB' YOUTH CENTRE	COMMUNITY YOUTH TUTOR	COMMISSION SERVICES	TOTAL YOUTH SERVICE PROVIDERS	SERVICES PER 1,000 YOUNG PEOPLE
Ashford	1	1	2	4	0.37
Canterbury	1	4	1	6	0.38
Dartford	1	1	2	4	0.48
Dover	1	2	2	5	0.52
Gravesham	1	1	1	3	0.32
Maidstone	1	1	3	5	0.38
Sevenoaks	1	1	3	5	0.52
Shepway	1	2	3	6	0.67
Swale	1	1	3	5	0.40
Thanet	1	2	5	8	0.66
Tonbridge & Malling	1	2	4	7	0.60
Tunbridge Wells	1	2	3	6	0.57
<b>KENT</b>	<b>12</b>	<b>20</b>	<b>32</b>	<b>64</b>	<b>0.48</b>
Medway	8	-	-	8	0.33
<b>KENT &amp; MEDWAY</b>	<b>20</b>	<b>-</b>	<b>-</b>	<b>72</b>	<b>0.46</b>

SOURCE: INTEGRATED YOUTH SERVICES (KENT COUNTY COUNCIL) AND MEDWAY YOUTH SERVICE

### EXAMPLE INFRASTRUCTURE PROJECTS IDENTIFIED

#### Chilmington Green

Capital cost to build youth service space in a new community hub in Ashford

#### Riverside & Whitstable

Youth centre expansions in Canterbury

#### Aylesham Youth Club Grant

funding towards the provision of youth services at Aylesham Youth Centre in Dover

#### New Deal Youth Centre

New youth centre building in Dover

#### Queenborough and Rushenden

Delivery of youth services at new developments in Swale

#### Tonbridge AEC

Enhancement of centre into a youth hub in Tonbridge & Malling

#### Tunbridge Wells District Youth Hub

New provision for Tunbridge Wells

### COSTS AND FUNDING

The following costs and funding have been identified for Kent and Medway:

**Cost = £9,390,000**

**Secured Funding = £4,610,000**

**Expected Funding = £730,000**

**Funding Gap = £4,050,000**

## COMMUNITY & INDOOR SPORTS FACILITIES



Community Facilities



Sports Facilities

### CURRENT SITUATION

Community and Indoor Sports facilities in Kent comprise both public and private facilities. Public facilities are provided and funded by the individual districts. This allows for anyone to access the facilities. Private facilities often require membership and payment for the use of those facilities.

### HEADLINES

- Swale, Thanet and Gravesham have the largest gaps in indoor sports provision, with the supply below the Kent + Medway average in 4 of the 5 categories.
- There are gaps in current facility distribution against the focus areas of housing growth. This can be seen in Maidstone, Thanet, North East Canterbury and North West Medway.
- Ashford, Canterbury, Sittingbourne and Dartford all have relatively strong provision of indoor sports provision where future housing growth is projected.

Figure 4.11 Kent & Medway

## Sports provision against housing growth

Contains Ordnance Survey data © Crown copyright and database right 2015.

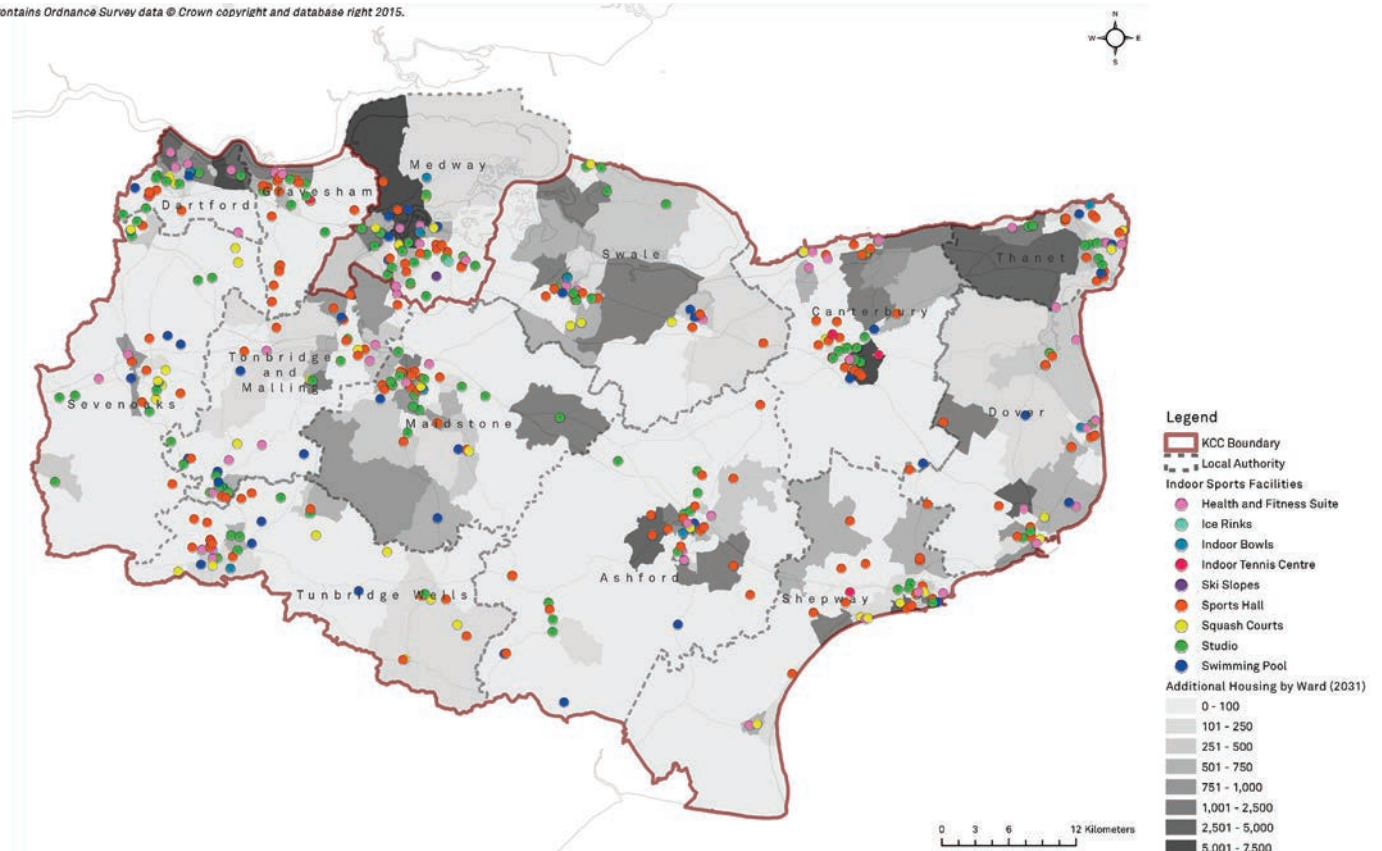


Table 4.10 Kent & Medway

## Community / Sports capacity

	SPORTS HALL COURTS	SWIMMING POOL LANES	SQUASH COURTS	GYM STATIONS	INDOOR BOWLS RINKS
Ashford	57	25	6	712	6
Canterbury	101	34	14	918	8
Dartford	49	15	5	637	6
Dover	53	15	10	595	4
Gravesham	66	14	7	403	0
Maidstone	63	31	8	1,044	8
Sevenoaks	58	47	18	326	16
Shepway	43	17	10	702	7
Swale	58	24	10	573	6
Thanet	67	25	8	543	8
Tonbridge & Malling	66	31	12	825	6
Tunbridge Wells	83	42	19	589	6
<b>KENT</b>	<b>764</b>	<b>320</b>	<b>127</b>	<b>7,867</b>	<b>81</b>
Medway	117	44	12	1,388	14
<b>KENT &amp; MEDWAY</b>	<b>881</b>	<b>364</b>	<b>139</b>	<b>9,255</b>	<b>95</b>

SOURCE: SPORT ENGLAND FACILITY DATABASE

SHADING INDICATES WHETHER SUPPLY IS ABOVE OR BELOW KENT & MEDWAY AVERAGE SUPPLY TO POPULATION RATIO.

### FUTURE REQUIREMENTS TO MEET GROWTH

-  Kent & Medway  
**17,100 sqm**  
new flexible community space
-  Kent & Medway  
**13**  
new swimming pools
-  Kent & Medway  
**18**  
new sports halls
-  Kent & Medway  
**3**  
new indoor bowl centres

### INFRASTRUCTURE COSTS

The following infrastructure requirements have been identified based on a combination of those actual planned projects according to the District Authorities and further AECOM analysis using Sport England and best practice standards.

-  **£43,320,000**  
community facilities
-  **£117,780,000**  
indoor sport facilities

The following costs and funding have been identified for Kent and Medway:

**Cost = £161,100,000**  
**Secured Funding = £3,530,000**  
**Expected Funding = £33,940,000**  
**Funding Gap = £123,630,000**



## OPEN SPACE AND RECREATION



Open Space & Recreation



Children's Play Space

### CURRENT SITUATION

Kent has a wide range of open spaces, outdoor sports pitches, outdoor sports facilities and children's playgrounds. Outdoor sports and playspaces are owned and operated by a mixture of private sector, voluntary organisations and local authorities.

### HEADLINES

- Shepway, Swale and Medway have the largest gaps in outdoor sports provision with the supply below the Kent + Medway average supply in 4 of the 5 categories.
- Ashford, Sevenoaks and Tonbridge and Malling have the highest levels of outdoor sport provision, with capacity above the Kent + Medway average in 4 of the 5 categories.
- There are several gaps in outdoor sports provision around future housing development sites, such as developments north of Dover and east of Herne Bay.
- The larger urban centres of Maidstone, Ashford, Canterbury, and northern parts of Dartford and Gravesham all have strong provision of existing outdoor recreational facilities.

Figure 4.12 Kent & Medway

## Open Space and Recreation Facilities

Contains Ordnance Survey data © Crown copyright and database right 2015.

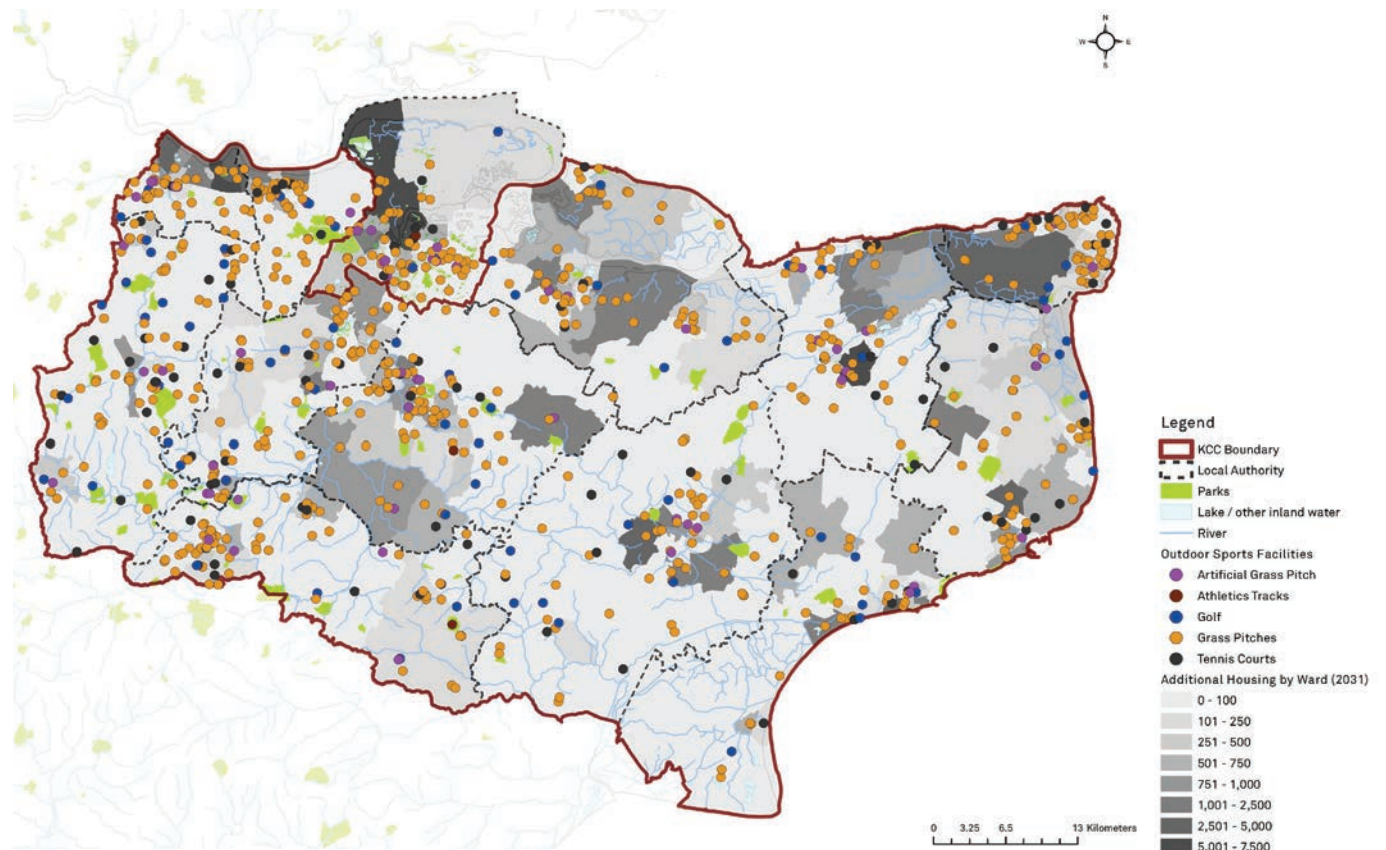


Table 4.11 Kent & Medway

## Open space and recreation capacity

	GRASS PITCHES	ARTIFICIAL TURF PITCHES	TENNIS COURTS	ATHLETICS TRACKS	GOLF COURSES
Ashford	182	8	17	8	11
Canterbury	243	15	30	6	5
Dartford	118	19	8	6	5
Dover	186	8	42	7	7
Gravesham	165	9	18	0	6
Maidstone	208	13	22	16	11
Sevenoaks	217	12	49	6	26
Shepway	100	4	15	0	12
Swale	179	7	13	0	12
Thanet	163	13	31	8	10
Tonbridge & Malling	268	10	29	6	15
Tunbridge Wells	292	11	57	6	4
<b>KENT TOTAL</b>	<b>2,321</b>	<b>129</b>	<b>331</b>	<b>69</b>	<b>124</b>
Medway	220	26	19	14	6
<b>KENT &amp; MEDWAY TOTAL</b>	<b>2,541</b>	<b>155</b>	<b>350</b>	<b>83</b>	<b>130</b>

SOURCE: NUMBER OF SITES ACCORDING TO SPORT ENGLAND FACILITY DATABASE

SHADING INDICATES WHETHER SUPPLY IS ABOVE OR BELOW KENT & MEDWAY AVERAGE SUPPLY TO POPULATION RATIO.

### FUTURE REQUIREMENTS TO MEET GROWTH



Kent & Medway

**8**

Artificial Turf Pitches



Kent & Medway

**315ha**

Playing fields



Kent & Medway

**42ha**

Childrens Playspace

### INFRASTRUCTURE COSTS

The follow infrastructure requirements have been identified based on AECOM analysis using Fields In Trust standards cost estimates have been applied using UK benchmarks.



Kent & Medway

**£112,130,000**

open Space and Recreation



Kent & Medway

**£49,530,000**

Childrens Playspace

The following costs and funding have been identified for open space, recreation and children's playspace for Kent and Medway:

**Cost = £161,670,000**

**Secured Funding = £0**

**Expected Funding = £115,980,000**

**Funding Gap = £45,680,000**